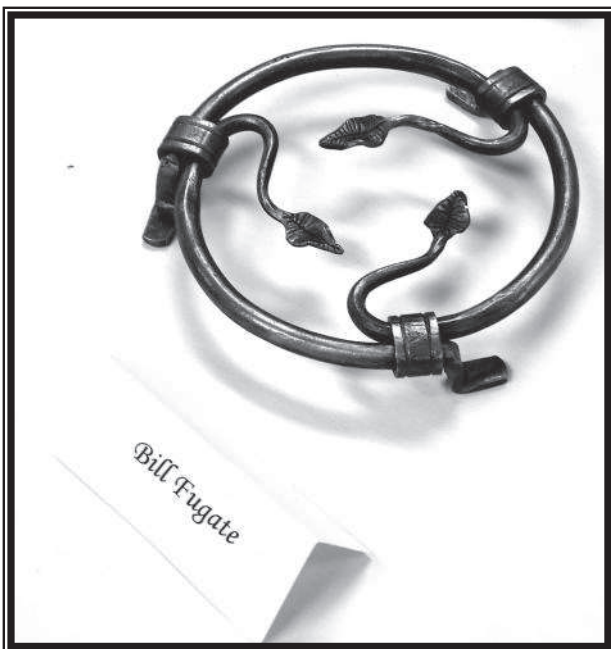
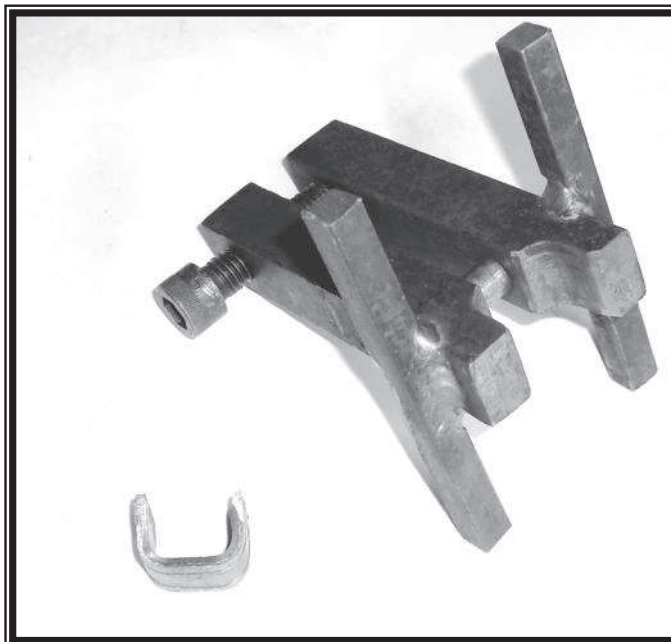


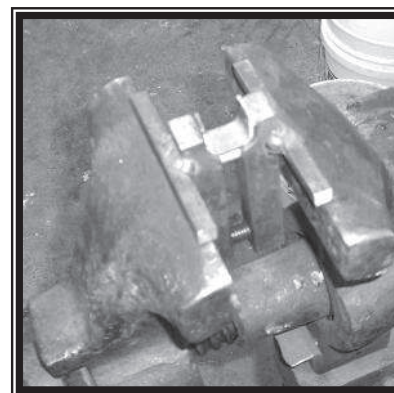
Bill Fugate's Collar Jig

Here are some pictures of the collar clamp. Also included is a shot of a "Boyd Holtan" trivet. The clamp is intended to sit atop the vise jaws. The collar is set in the clamp and heated cherry red. The trivet is then set in the collar and vise tightened to close it. The ends of the collar are then closed over and set tight with a hammer.

This article is reprinted from the June, 2009 Appalachian Blacksmiths Association Newsletter! Thanks ABA!



I've made 20 or more trivets like this for gifts and as a result have a whole set of jigs to speed up the process. I've always fought the collars, so I recently fought the collars, so I recently made this collaring jig. Now I can install three collars in about 5 minutes.



Francis Whitaker's Collar Formula

To collar SQUARE or RECTANGULAR shapes:

Add perimeter of material being collared plus 2-1/2 times the thickness of the collar material.

To collar ROUND shapes:

Add diameters of material being collared plus 3 times the thickness of the collar material.

